

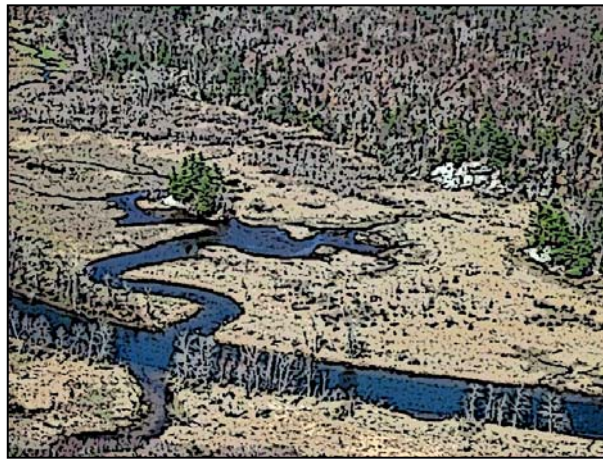
*Tidewater Institute  
A Partnership for the lower Connecticut River*

**2005**

## ***Tools for Intelligent Tinkering***

### ***A Natural Resource Guide***

*For Lower Connecticut River Land Use Commissioners*



*“To keep every cog and wheel is the first precaution of intelligent tinkering”*

*-- Aldo Leopold*

**Judy Preston**

***Tidewater Institute***



*Funding provided by the Long Island Sound Fund administered by the Connecticut Department of Environmental Protection (DEP), through the sale of Long Island Sound license plates and contributions.*

**2005**

## ***Tools for Intelligent Tinkering***

### ***A Natural Resource Guide***

*for Lower Connecticut River Land Use Commissioners*

*Judy Preston, Tidewater Institute*

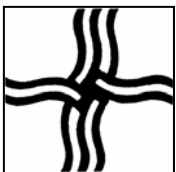
*“To keep every cog and wheel is the first precaution of intelligent tinkering”*

*-- Aldo Leopold*

***This is*** an initial effort to bring together a multitude of resource references – books, journals, organizations and especially websites – to benefit local land use decision makers in the lower Connecticut River valley. Local volunteer commissioners representing planning, zoning, wetlands, and conservation commissions, make the regulatory decisions that result in our built landscape. The following information is not limited to land use commissioners, however, and can be useful to any number of other individuals who have a vested interest in the land use process: developers, landscape architects, land managers, land trusts, and the list goes on.

The responsibilities of local land use officials are increasingly demanding and complex. This Toolbox is intended to address the challenge of finding quick access to experts and information about local natural resources and their link to our communities and the quality of our lives.

The following collection clearly has limitations. Some of the information will become dated, although agencies will not. This is also not exhaustive, but it's a start. Its purpose is to provide ideas and encourage collaboration and communication among and between individuals, land use commissions and towns in the lower Connecticut River area. Additions and suggestions are welcomed.



***Tidewater Institute*** is a non-profit initiative, in partnership with the Connecticut River Estuary Regional Planning Agency (CRERPA) and the Connecticut River Gateway Commission. Tidewater Institute is designed to work with land use officials in the lower valley to 1) help the eight communities of Haddam, East Haddam, Lyme, Chester, Deep River, Old Lyme, Essex and Old

*Tidewater Institute*  
*A Partnership for the lower Connecticut River*

Saybrook work together collaboratively to recognize and protect the natural resources of the lower Connecticut River valley, 2) provide practical ecological education that is specific to the River valley to assist with decision making that affects natural resources, and 3) facilitate the sharing of existing information and tools, and create new ones to assist local decision makers.

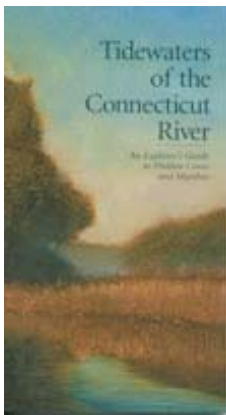
**For more information** about Tidewater Institute, the Regional Planning Agency or the Gateway Commission, call (860) 388-3497.



*With Thanks*

This project has been funded by a grant from the Long Island Sound Fund administered by the Connecticut Department of Environmental protection (DEP), through the sale of Long Island Sound license plates and contributions. It accompanies a three part workshop series for land use commissioners in the lower Connecticut River valley. The following conservation professionals from around the state provided their input on sources of information: Holly Drinkuth (GVI), Shelley Green (TNC), John Mullaney (USGS), Martha Smith (Yale CCS), Leslie Lewis (DEP), Eric Thomas (DEP), Steve Broderick (GVI), Sandy Breslin (Audubon), Paul Woodward (CRCCD), Walter Smith (NRCS).

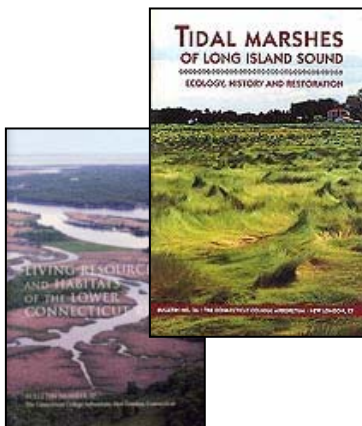
## Best General Books on Region



### Tidewaters of the Connecticut River

#### **Tidewaters of the Connecticut River: An Explorers Guide to Hidden Coves and Marshes**

An all-new guidebook that promises to be the definitive guide to touring some of the most beautiful areas of the lower River. Includes 12 self-guided tours with descriptive text, route maps and launch points. Also features essays by 9 experts on the natural history, flora and fauna of the tidewaters region. Beautifully illustrated in color with 14 original paintings by artist David Dunlop and numerous photographs. 123 pp, soft-cover. Fully indexed. Price: \$20.00 (includes postage, handling and any applicable state taxes)



**Connecticut College bulletins** The Arboretum publishes a series of low-cost bulletins on various timely natural history, horticultural and conservation topics. **To order publications call 860-439-5020**

**OR send request to:** Connecticut College Arboretum  
Box 5201  
270 Mohegan Avenue  
New London, CT 06320

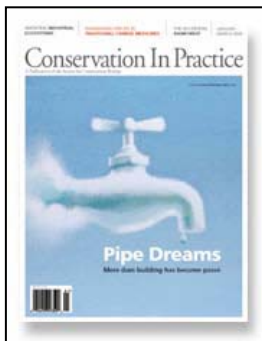
**E-mail request:** [abdav@conncoll.edu](mailto:abdav@conncoll.edu).

## Best Conservation Journals

**Natural Areas Journal** <http://64.92.126.53/naj.htm>



The *Natural Areas Journal* is published quarterly (January, April, July, October) by the Natural Areas Association. Membership in the Natural Areas Association is \$30 for individuals, \$20 for retirees, \$15 for students, \$75 for libraries, \$125 for agencies or institutions, \$250 for corporate members, and \$500 for individual life membership. Membership is open to anyone interested in natural areas management. Membership includes the *Natural Areas Journal*, *Natural Areas News*, and reduced registration fees at the annual Conference and for other items we sell from time to time. To join, send a check to Natural Areas Association, P.O. Box 1504, Bend, OR 97709. For more information, write to the address above, or send your request by e-mail to the Natural Area Association at [naa@natareas.org](mailto:naa@natareas.org).



**Conservation in Practice** <http://conbio.net/InPractice/>

About *Conservation In Practice*

"*Conservation In Practice* is a uniquely accessible way of quickly getting the big-picture, cream-of-the-crop ideas, and useful statistics, without wading through hundreds of journal articles that you aren't interested in. For really busy professionals, its well worth the modest amount of time it takes."

- Carl Safina, President, Blue Ocean Institute

Membership/Subscriber Services

Society for Conservation Biology

4245 N. Fairfax Drive, Suite 400 Arlington, VA 22203 USA

## Free Pamphlets and Publications

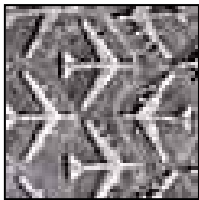
UConn Cooperative Extension office in Haddam, 1066 Saybrook Road,  
Haddam, (860) 345-4511

Connecticut River Estuary Regional Planning Agency (CRERPA), 455 Boston Post Road  
(next to train station), Old Saybrook, (860) 388-3497

## Best Websites

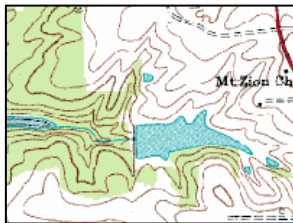


<http://www.natureserve.org/> A Network Connecting Science with Conservation



<http://terraserver.microsoft.com/> TerraServer The TerraServer-USA Web site is one of the world's largest online databases, providing free public access to a vast data store of maps and aerial photographs of the United States. TerraServer is designed to work with commonly available computer systems and Web browsers over slow speed communications links.

<http://topozone.com> Topozone – shaded relief maps, aerial



TopoZone is the Web's center for professional and recreational map users. We've worked with the USGS to create the Web's *first* interactive topo map of the entire United States. And we've spent four years making our maps the *best* on the Web as well.



In addition to serving maps on the TopoZone, we're also the Web's best source for custom digital topographic data for Web, GIS, and CAD applications, and our **Web Services** system can add our maps directly to your desktop or server through our **ArcIMS** and **OGC WMS** interfaces.

Our free **My TopoZone** feature lets you personalize your TopoZone usage and save your own map preferences; it's also the gateway to adding enhanced **TopoZone Pro** and other services to your TopoZone system.

## **Organizations**

- **Federal**

<http://conservect.org/> **Connecticut River and Coastal Conservation District**

<http://www.epa.gov/region1/> **New England Environmental Protection Agency**

<http://www.epa.gov/region01/eco/lis/> **Long Island Sound Study, NE EPA**

<http://ct.water.usgs.gov/> **United States Geological Survey (USGS) Connecticut**

<http://www.ct.nrcs.usda.gov/> **Natural Resources Conservation Service, CT**

- **State**

**Connecticut River Estuary Regional Planning Agency (CRERPA)**

455 Boston Post Road

P.O. Box 778

Old Saybrook, Connecticut 06475

Telephone: (860) 388-3497

Fax: (860) 395-1404

E-Mail: [crerpa@snet.net](mailto:crerpa@snet.net)

Website: [www.crerpa.org](http://www.crerpa.org)

Executive Director: Linda Krause

**State of Connecticut Department of Environmental Protection**

[www.dep.state.ct.us](http://www.dep.state.ct.us) Main Number: (860)424-3001, General info: (860) 424-3000

**Midstate Regional Planning Agency**

100 Dekoven Drive

P.O. Box 139

Middletown, Connecticut 06457

Telephone: (860) 347-7214

Fax: (860) 347-6109

E-Mail: [geoffcolegrove@snet.net](mailto:geoffcolegrove@snet.net)

Executive Director: Geoffrey L. Colegrove

**Connecticut River Gateway Commission (see CRERPA)**



*Tidewater Institute*  
*A Partnership for the lower Connecticut River*

• **Private/Non-Profit**

**Land Trust Service Bureau (LTSB) , The Nature Conservancy**

<http://nature.org/wherewework/northamerica/states/connecticut/about/art8477.html>

<http://www.woodstockconservation.org/Links.htm>

Woodstock conservation commission website has links to other good sites and is a great example of an active conservation commission



**Connecticut Forest and Park Association** established and maintains the 700 miles of the Blue-Blazed Hiking Trail System. The Connecticut Forest and Park Association, the oldest private nonprofit environmental organization in Connecticut, invites you to explore their site and to join them in preserving, protecting and enjoying our natural heritage. [www.ctwoodlands.org](http://www.ctwoodlands.org)

110 YEARS OF CONSERVATION



**Connecticut Association of Conservation and Inland Wetlands Commissions (CACIWC)** To promote the statutory responsibilities of Connecticut Conservation Commissions and Inland Wetland Commissions and to foster environmental quality through education and through the conservation and protection of wetlands and other natural resources. [www.caciwc.org](http://www.caciwc.org)



**Connecticut River Watershed Council (CRWC)**

Their mission is to promote improvement of water quality and the restoration, conservation, wise development and use of the natural resources of the Connecticut River watershed. [www.ctriver.org](http://www.ctriver.org)

**Potapaug Audubon** P.O. Box 591, Old Lyme, CT 06371 Phone: (860) 399-6400  
[www.potapaugaudubon.org](http://www.potapaugaudubon.org) Contact Person: Barbara Barron

*Tidewater Institute*  
*A Partnership for the lower Connecticut River*

- **Academic**

**Connecticut College Arboretum** <http://camel2.conncoll.edu/ccrec/greennet/arbo/>  
Mission is to provide programs and publications about conservation, horticulture, gardening, botany, and natural history, which work to enhance public understanding of the natural world.



**UConn Cooperative Extension: NEMO (NonPoint Education for Municipal Officials)** <http://nemo.uconn.edu/>

**Wesleyan University Department Earth and Environmental Sciences**  
<http://www.wesleyan.edu/ees/>

**Yale School of Forestry** <http://www.yale.edu/forestry/>

**Yale Center for Coastal and Watershed Systems** <http://www.yale.edu/ccws/>

**UConn Department of Ecology and Evolutionary Biology**  
<http://www.eeb.uconn.edu/>

**UConn College of Agriculture and Natural Resources**  
<http://www.canr.uconn.edu/>

## **By Topic**

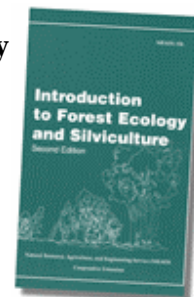
- **Forestry**

**Extension forestry sources of info** <http://www.canr.uconn.edu/ces/forest/pub.htm>

**Coverts Program** <http://www.ruffedgrousesociety.org/covertsprogram.asp>

**Working with Your Woodland, A Landowners Guide** Beattie, Thompson and Levine

**Introduction to Forest Ecology and Silviculture** Thom J. McEvoy





- **Invasive Species**

University of Connecticut Invasive Plant Working Group

<http://www.hort.uconn.edu/cipwg/>

[www.northeastans.org/infosource0303.doc](http://www.northeastans.org/infosource0303.doc) List of sources of information on Invasives from the Conte Refuge group

<http://invasives.eeb.uconn.edu/ipane/index.html> Invasive Plant Atlas of New England from the Department of Ecology and Evolutionary Biology at UConn

<http://www.invasivespecies.gov/other/orgcouncils.shtml> Agencies & Organizations: State Invasive Species Councils/Task Forces. A gateway to Federal and State invasive species activities and programs.

<http://tncweeds.ucdavis.edu/links.html> The Nature Conservancy Invasive Species Initiative

<http://dep.state.ct.us/cgnhs/invasive.htm> State DEP non-native invasive plant species program

- **Stewardship**

Connecticut Forest and Park Association (see Organizations)

National Trails Clearinghouse [www.trailsandgreenways.org](http://www.trailsandgreenways.org)

National Park Service Rivers and Trails Program

[www.nps.gov/ncrc/programs/rtca/helpfultools/ht\\_publications.htm](http://www.nps.gov/ncrc/programs/rtca/helpfultools/ht_publications.htm)

- **Alternative Landscaping**

*Redesigning the American Lawn: A Search for Environmental Harmony*. F. Herbert Bormann, Diana Balmori and Gordon T. Geballe. Yale University Press. 1993. Three professors at Yale and graduates set forth a convincing message on making a change.

Organic land care [www.ctnofa.org](http://www.ctnofa.org)

Northeast Organic Farming Association  
[www.organiclandcare.net](http://www.organiclandcare.net)



*Tidewater Institute*  
*A Partnership for the lower Connecticut River*

**Connecticut College Arboretum SALT Program: Smaller American Lawns Today**  
<http://www.conncoll.edu/ccrec/greenet/arbo/salt/saltplants.html>

- **Historical**

**Connecticut River Museum**  
67 Main St.  
Essex, CT 06426 (860) 767-8269

- **Land Protection**

**Land Trust Alliance** <http://www.lta.org/>

**The Nature Conservancy** <http://nature.org/>

**Trust for Public Lands** <http://www.tpl.org/index.cfm>

**State Open Space Program/Land Acquisition Department**  
<http://dep.state.ct.us/rec/openspace/opensp31.htm>

**Conservation Capital: Sources of Private and Public Funding for Land Conservation, A Citizen's Guide from the Wilderness Society** [www.wilderness.org](http://www.wilderness.org)

**Conservation Fund** [www.conservationfund.org](http://www.conservationfund.org)

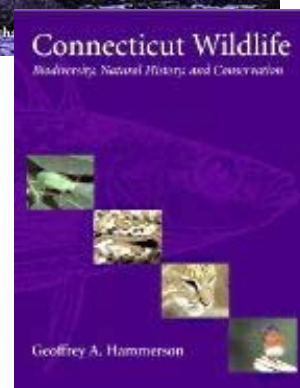
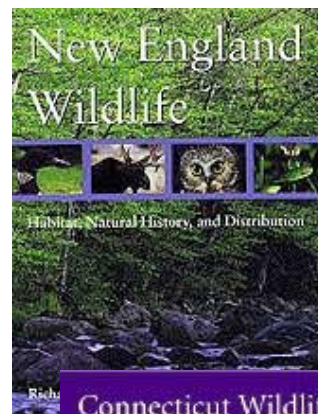
- **Rare and Endangered Species and Wildlife**

**Natural Diversity Data Base, Connecticut DEP**  
<http://dep.state.ct.us/cgnhs/nddb/nddb2.htm>

**"A Field Guide to the Animals of Vernal Pools"**  
Massachusetts Division of Fisheries & Wildlife  
Natural Heritage & Endangered Species Program  
Route 135  
Westborough, MA 01581  
(508) 792-7270, ext. 200

***New England Wildlife: Management of Forested Habitats*, Richard DeGraaf Hanover, NH, University Press of New England, 2001**

***Connecticut Wildlife*, Geoffrey A. Hammerson**  
Biodiversity, Natural History and Conservation.  
Available at DEP Bookstore.



*Tidewater Institute  
A Partnership for the lower Connecticut River*

**Landowners Guide to Inventorying and Monitoring Wildlife in New Hampshire**  
from the New Hampshire Cooperative Extension office; applicable tools for  
Connecticut <http://ceinfo.unh.edu/Pubs.htm>

**Keeping Track**



[www.keepingtrack.org](http://www.keepingtrack.org)

To inspire community participation in the long-term stewardship of wildlife habitat.

• **GIS Mapping and Maps**

GIS and Mapping Software (business) <http://www.esri.com/>

UConn Cooperative Extension Service, Haddam, Sandy Prisloe (860) 345-4511

Connecticut River Estuary Regional Planning Agency (CRERPA) Margot Burns,  
GIS Specialist (860) 388-3497

GIS info for non-profits <http://www.greeninfo.org/index.html>

State park maps <http://www.dep.state.ct.us/stateparks/maps/cockaponset-n.pdf>

DEP Coastal Access Guide <http://www.dep.state.ct.us/coastalaccess>

• **Watershed Management/Stormwater**

UConn Cooperative Extension NonPoint Education for Municipal Officials  
<http://nemo.uconn.edu/>

EPA <http://cfpub.epa.gov/npdes/stormwatermonth>

Stormwater Manual from DEP  
<http://www.dep.state.ct.us/wtr/stormwater/strmwtrman.htm>

American Rivers <http://www.amrivers.org/newreportonstormwatermanagement.html>

Natural Approaches to Stormwater Management, Puget Sound Action Team  
[www.psat.wa.gov/publications](http://www.psat.wa.gov/publications)

Riparian Buffers <http://www.crjc.org/riparianbuffers.htm>



*Tidewater Institute*  
*A Partnership for the lower Connecticut River*

Long Island Sound Study [www.epa.gov/region01/eco/lis/epane.html](http://www.epa.gov/region01/eco/lis/epane.html)

- **Water Resources**

Rivers Alliance <http://www.riversalliance.org>

Connecticut Association of Wetland Scientists (CAWS) [www.ctwetlands.org](http://www.ctwetlands.org)

Center for Watershed Protection [www.cwp.org](http://www.cwp.org) The Practice of Watershed protection: Techniques for Protecting our Nation's Streams, Lakes, Rivers and Estuaries. 150 articles reviewed and summarized.

American Rivers <http://www.amrivers.org/index.html>

- **Advocacy/Legislation**

The Connecticut League of Conservation Voters [www.ctlc.org](http://www.ctlc.org) Provides environmental scorecard of elected officials, Environmental Briefing Book [www.conservationeducation.org](http://www.conservationeducation.org)

- **Legal**

*What's Legally Required* a book by Michael Zizka

Available at the DEP bookstore



Designed to help local land-use officials understand the legal rules that both shape and limit their powers

- **Financial Resources**

Guidestar <http://www.guidestar.org/index.jsp> National Database of nonprofits

Rockfall Foundation <http://www.rockfallfoundation.org/>

**Middlesex County Community Foundation**

Email [middlesexcounty@snet.net](mailto:middlesexcounty@snet.net)

Tel: (860) 347-0025

Chester, Clinton, Cromwell, Deep River, Durham, East Haddam, East Hampton, Essex, Haddam, Killingworth, Middlefield, Middletown, Old Saybrook, Portland, Westbrook

Grant Development Network (GDN) [www.GDNHelps.org](http://www.GDNHelps.org)

Grant information for non-profits [www.cityofnewhaven.com/library/nprcsites.htm](http://www.cityofnewhaven.com/library/nprcsites.htm)

*Tidewater Institute*  
*A Partnership for the lower Connecticut River*

- **Miscellaneous**

**Smart Growth** <http://www.csc.noaa.gov/alternatives/>

**Planners List Serve:** <http://www.plannersweb.com/store/pcjbacfr.html>

**Consensus Building/Problem Solving** [policyconsensus.org/pubs/npec\\_pubs.html](http://policyconsensus.org/pubs/npec_pubs.html)

**Local Government Cooperative Ventures in Connecticut**  
[www.opm.state.ct.us/igp/AICR/coopvnt.HTM](http://www.opm.state.ct.us/igp/AICR/coopvnt.HTM)

**Local Environmental Law, Sample Ordinances and Innovations**  
[www.landuse.law.pace.edu](http://www.landuse.law.pace.edu)

**Assistance to Communities; Conservation Technical Assistance Program (Fact Sheet Book)** [www.ct.nrcs.usda.gov](http://www.ct.nrcs.usda.gov)

**Environmental Review Team** Multi-disciplinary team that assists municipalities by reviewing sites proposed for development or preservation (860) 345-3977  
[ertcoordinator@sbcglobal.net](mailto:ertcoordinator@sbcglobal.net)

**NOAA Photo Library (free downloads)** [www.photolib.noaa.gov](http://www.photolib.noaa.gov)

**[RealClimate.org](http://RealClimate.org)** Up to date and balanced information on climate change

*Judy Preston*  
*Tidewater Institute*



**Jpreston65@sbcglobal.net**